

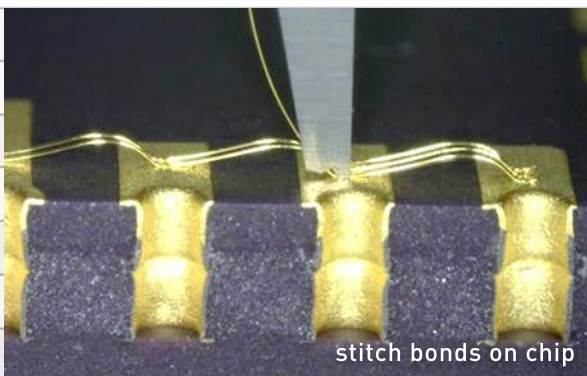


H52

Dynamic Search



The TPT dynamic search box offers 3 features:
 manual approaching the substrate surface with small steps for better aiming, manual raising or lowering the search height in 30µm steps to bond the second bond on a different bond height and connecting single wedge bonds to a series of stitch bonds.



- + dynamic search adjustment
- + dynamic bond length adjustment
- + stitch function

